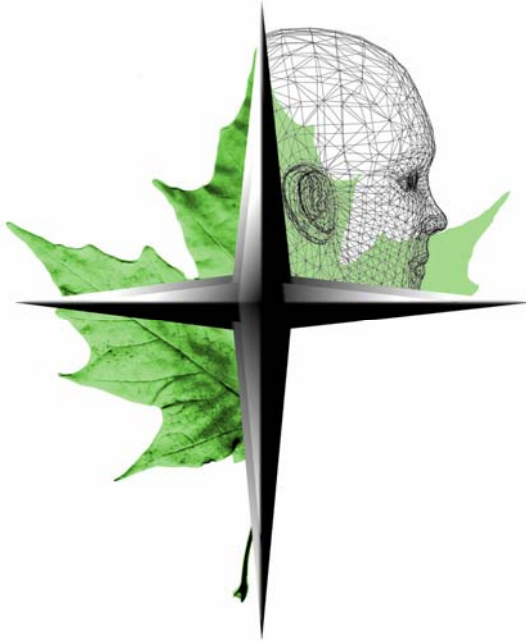


C A S E S T U D Y

F O R E S T P L A N N I N G W I T H R E M S O F T[®]



Corner Brook Pulp and Paper obtains CAN/CSA certification criteria

Remsoft Spatial Planning System helps company manage the forest ecosystem - not just the timber resource

A software system that planners at Corner Brook Pulp and Paper Limited (CBPPL) have been using to develop actionable long-term forest management plans, is performing 'double-duty' for the company, helping it show compliance with demanding certification standards.

CBPPL is a Corner Brook, Newfoundland and Labrador-based subsidiary of Kruger Inc. producing over 420,000 tons of newsprint per year from nearly two million hectares of managed lands. The company has been using the Remsoft Spatial Planning System for four years to formulate integrated long-term management plans, including formulating wood supply projections, creating harvest schedules and conducting sensitivity analysis on present and future forest states.

"The ability to provide this kind of information is integral to CBPP," explains Ray Brake, GIS specialist with CBPPL Woodlands Department. "As a result of using this software, we have been able to tighten the linkages between planning and operations."

Sustainability Certification

With this environmental system in place and a corporate commitment to sustainability, CBPPL sought certification of its managed lands in 2002.

"CBPPL wanted to illustrate to the public (the landowners) and to its customers that the land we manage, our defined forest area (DFA), was being managed on a sustainable basis," Mr. Brake says.

"Our approach has evolved from management of the timber resource to management of the forest ecosystem. That means incorporating social, environmental and economic values in the sustainable development of Newfoundland's forests."

These values and indicator targets were determined with the help of a Public Advisory Committee, formed in 2002, and consisting of representatives from local communities, unions, sub-contractors, native groups and environmental organizations amongst others. With this groundwork in place, development began on a Sustainable Forest Management plan for the Company's Defined Forest Area (DFA).



Suite 160, Frederick Square, 77 Westmorland St.
Fredericton, New Brunswick, Canada E3B 6Z3
T: 1 800 792 9468 or +1 506 450 1511
email: info@remsoft.com www.remsoft.com

“The Remsoft suite of modeling software played an important role in determining acceptable levels for various indicator targets which led to CBPPL achieving CSA certification in August 2004.”

This SFM plan describes the DFA and CBPP Woodlands' environmental management system and how the company's sustainability plan meets the performance criteria outlined in the CSA Z-809 Standard - considered Canada's national standard for sustainable forest management.

The plans also describe the management strategies that have been defined to meet each of the targets.

Mr. Brake notes that the Remsoft software was used in the creation of sustainable forest management plans in both the initial modeling phases and ultimately to communicate plans and their impacts (as well as alternative scenarios and impacts) to Public Advisory Committee and subsequently to auditors.

"We used the software to run future projections and to carry out analysis of alternate management strategies. The Remsoft suite of modeling software played an important role in determining acceptable levels for various indicator targets which led to CBPPL achieving CSA certification in August 2004," he says.

Certification auditors, Quality Management Institute, conducted the audit for registration to the CSA-Z-809 standard this summer. The audit was witnessed by the Standards Council of Canada, who stated that "The audit was one of the most thorough and rigorous it had witnessed".

Zero non-conformances were recorded during the audit and CBPPL was registered to the CSA Z-809-02 Standard. Its entire SFM Plan can be viewed on the Company's Web site at <http://www.cbpppl.com>.

Second certification standard renewed

In addition to its CSA achievements, Corner Brook Pulp and Paper Limited's woodlands operations are also re-registered to the ISO 14001 environmental management systems standard. This certification, obtained in 2001, is also an internationally recognized environmental certification system requiring independent, third-party assessment.

CAN/CSA Z809 and ISO 14001 are complementary certification standards. While ISO 14001 certifies an environmental management system, which can apply to any type of business, CAN/CSA Z809 is tied to meeting criteria that are specifically directed at sustainable forest management practices applicable to a defined forest area.

Together, these thorough certification standards ensure that systems and processes are in place to achieve very high levels of environmental and forest management performance exceeding the laws and regulations.

