

User group favorites

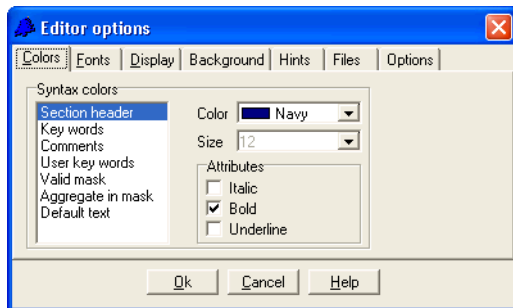
Five features that users find useful

Applies to: Remsoft Spatial Planning System 2006.1

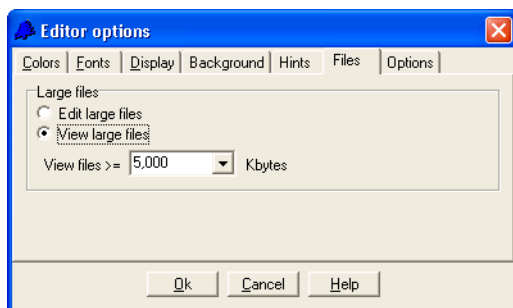
Date: March 15, 2006

Remsoft has hosted five user group meetings and open software training sessions over the past two years. In doing so, we have had abundant feedback from users. The purpose of this tech tip is to share some features that users were not necessarily aware of, but that they found quite useful.

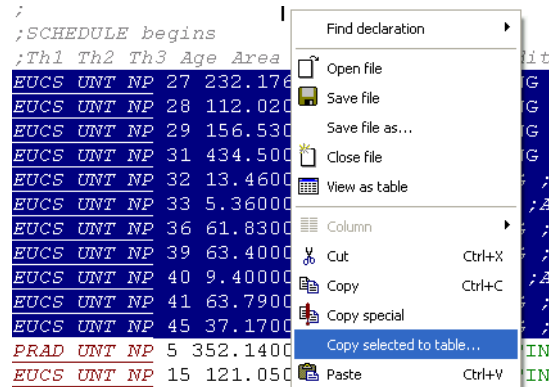
1 Change the syntax colors. Some users find that the default syntax colors (reds, blues and greens) are difficult to differentiate on screen. You can customize the syntax colors by clicking *Tools > Editor options*. The *Colors* tab contains the syntax color settings, which you can change to anything that you like.

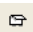


2 Open large files in view mode. Large size text files including Woodstock input files such as Yields or Areas sections are slow to open for editing and difficult to browse. You can configure the editor to open large text files in a view mode, in which files are loaded one-screen-at-a-time, rather than in edit mode, in which the entire file is loaded. To activate view mode and set the file size threshold, click *Tools > Editor options*. The *Files* tab contains settings to activate view mode and set the file size threshold. If you open a file larger than the threshold, it will be opened in view mode.



3 Copy selected text to a database table. It is sometimes more convenient to analyze or query model data such as yield tables and harvest schedules in a database table. The editor contains an option to copy selected text directly to a database table on-demand. To do this, simply select some text in the editor and then right-click and select *Copy selected to table* from the context menu. This obviously works best for model sections containing data suited to a table view such as the Areas, Schedule and Yields sections.



4 Close all open files. An undocumented editor feature, you can close all open files by simultaneously pressing the Ctrl key and clicking the close file button . The model will remain open.

5 View Areas and Schedule sections in a table. You can view both Woodstock Areas and Schedule sections in a database table. When you do this, you get access to the table editing functions such as data filters and column sorts: an excellent way to drill down. To do this, open either the Areas or Schedule section, right-click and select *View as table* from the context menu. To revert back to the text view, right-click in the table and select *Syntax view* from the context menu.